

No. Malaria total Summary report: SMRU Migrant: Oct - Sep - 2016

Start Date: 01-Oct-15, End Date: 01-Sep-16, Reporting Period: 01-Oct-15 to 01-Sep-16

Month	Diagnosis	Site																			
		MKT				MRC				WPA				MKK				TKV			
		0-4 Years	5-15 Years	>15 Years	Total	0-4 Years	5-15 Years	>15 Years	Total	0-4 Years	5-15 Years	>15 Years	Total	0-4 Years	5-15 Years	>15 Years	Total	0-4 Years	5-15 Years	>15 Years	Total
Oct to Sep	Lower respiratory tract infection	509	106	229	844	177	102	114	393	451	58	57	566	0	0	0	0	0	0	0	0
	Upper respiratory tract infection	528	207	366	1101	139	184	148	471	983	435	433	1851	0	0	0	0	0	0	0	0
	Watery Diarrhoea	228	25	49	302	63	10	10	83	190	6	29	225	0	0	0	0	0	0	0	0
	Bloody diarrhoea	46	10	27	83	6	5	2	13	1	0	2	3	0	0	0	0	0	0	0	0
	Typhoid	19	31	26	75	1	3	11	15	5	1	4	10	0	0	0	0	0	0	0	0
	Abscess/Wound/Burns	51	62	181	294	19	39	56	114	63	39	80	182	0	0	0	0	0	0	0	0
	Skin diseases	138	67	147	352	36	27	23	86	112	47	63	222	0	0	0	0	0	0	0	0
	Meningitis	5	0	2	7	0	0	0	0	0	0	0	0	0	0	0	0	0	0	0	0
	Measles	1	2	0	3	0	0	0	0	0	0	0	0	0	0	0	0	0	0	0	0
	UTI	7	10	113	130	1	0	11	12	11	6	40	57	0	0	0	0	0	0	0	0
	B1 deficiency	3	1	27	31	0	0	8	8	1	1	16	18	0	0	0	0	0	0	0	0
	Worms	83	100	107	290	39	67	47	153	269	197	267	733	0	0	0	0	0	0	0	0
	Others	2011	791	3157	5948	232	346	717	1295	2098	791	3434	6323	0	0	0	0	0	0	0	0
	Total	3628	1402	4431	9461	715	783	1147	2643	4184	1581	4425	10190	0	0	0	0	0	0	0	0

Respiratory infections total Summary report: SMRU Migrant : Oct 2014-Sep 2015

Month	Site	AgeGroup	Upper Respiratory	Lower Respiratory	Pneumonia(O PD)	Pneumonia(PD)	Total	Deaths
Oct to Sep	MKT	< 1 Year	261	29	95	24	409	0
		1-4 Years	257	14	172	13	456	0
		5-14 Years	306	11	50	2	502	0
		>=15 Years	332	147	20	3	369	0
	MRC	< 1 Year	67	15	50	1	133	0
		1-4 Years	106	7	98	0	211	0
		5-14 Years	176	25	75	0	276	0
		>=15 Years	182	113	6	0	301	0
	WPA	< 1 Year	419	18	117	21	575	0
		1-4 Years	408	11	111	9	537	0
		5-14 Years	390	4	50	2	446	1
		>=15 Years	636	18	30	4	688	0
	MKK	< 1 Year	38	11	26	2	77	0
		1-4 Years	59	1	52	2	114	0
		5-14 Years	77	3	11	0	91	0
		>=15 Years	101	47	8	0	156	0
	Total	Total	3813	474	971	83	5341	1

Clinic	Cause of death
MKT (18)	Unknown cause of death (Patient was not seen SMRU clinic for 4 month)
	Respiratory failure due to COPD with exacerbation, recent chest trauma, UTI, general weakness
	Meconium Aspiration
	cardiorespiratory failure due to congenital Heart disease
	Ischemic Stroke
	Unknown
	Unknown as patient die at home
	Septicemia with multorgan failure
	Septic Shock
	Unknown as Patient die at PhobPra Hospital, but possibly typhoid intestinal perforation
	Cardio Respiratory arrest due to kernicterus and staph aureus sepsis
	Cardiorespiratory arrest due to hypoxia
	Cardiorespiratory arrest
	Unknown as patient died in Phop Phra Hospital
	Unknown as Patient died at home last visit to SMRU >3 before death
	Cardiorespiratory arrest
	Sudden Death
	Unknown as Patient died at home
WPA (24)	Hypertensive encephalopathy
	Very severe pneumonia, septicemia respiratory failure
	Congenital heart failure
	Severe IUGR
	SUSPEIT
	EONS, Diaphragmatic Hernia
	Unknown
	Cerebral Malaria
	Respiratory failure
	Viral Meningitis
	Respiratory Failure
	Multiple Organ Failure
	Stroke
	Sepsis

Clinic	Cause of death
	Prematurity
	Sepsis
	Respiratory insufficiency
	Suspected rabies
	Respiratory Failure
	Respiratory Failure
	Acute bilirubin encephalopathy
	Septic shock Multi organ failure
	Septicaemia with multiple organ failure
	Uterus inversion PPH
Other KKTB (1)	Congestive heart failure
Other WPARB (20)	Acute renal failure with severe immunodeficiency
	Severe Hypovolemic Shock
	Severe immunosuppression with wasting syndrome
	Respiratory failure
	Cryptococcal meningitis-Relapse (reported by family member)
	Respiratory arrest
	Cardiopulmonary Failure
	Massive Haemoptysis
	Acute renal failure with corpulmonale
	Severe immunodeficiency with late-stage AIDS
	Cardiac arrest with severe anemia and acute renal failure
	Severe immunosuppression with meningitis due to TB and cryptococcus
	Respiratory Failure
	Severe immunosuppression with suspected systemic fungal infection
	Cardiopulmonary arrest
	Respiratory Failure
	Cardiac arrest due to severe Transverse myelitis
	Severe MAC (Mycobacterium avium complex)
	Acute pulmonary edema with acute renal failure
	Respiratory failure with heart failure

No. Malaria total Summary report: SMRU Migrant MKT: Oct-2015-September-2016

Month		Age						Total
		<5y		5-15y		>15y		
		Male	Female	Male	Female	Male	Female	
Oct-15	Lower respiratory tract infection	28	23	5	3	8	16	83
	Upper respiratory tract infection	20	29	6	4	17	19	95
	Watery diarrhoea	8	3	1	0	1	3	16
	Bloody diarrhoea	1	2	0	0	1	0	4
	Typhoid	0	1	2	1	1	1	6
	Abscess/Wound/Burns	1	1	3	3	12	12	32
	Skin diseases	9	3	8	1	12	13	46
	Meningitis	1	0	0	0	0	0	1
	Measles	0	0	0	1	0	0	1
	UTI	0	0	0	1	2	11	14
	B1 deficiency	0	2	0	0	1	5	8
	Worms	6	3	6	6	3	3	27
	Others	59	48	24	23	82	182	418
	Total	133	115	55	43	140	265	751
Nov-15	Lower respiratory tract infection	27	14	2	4	9	6	62
	Upper respiratory tract infection	18	23	6	4	8	24	83
	Watery diarrhoea	4	4	0	0	1	3	12
	Bloody diarrhoea	2	0	0	0	1	1	4
	Typhoid	0	0	2	1	3	2	8
	Abscess/Wound/Burns	7	4	2	2	10	3	28
	Skin diseases	10	4	7	3	1	8	33
	Meningitis	0	0	0	0	0	0	0
	Measles	0	0	0	0	0	0	0
	UTI	1	0	0	3	3	6	13
	B1 deficiency	0	0	0	0	1	2	3
	Worms	3	2	2	1	2	5	15
	Others	59	49	22	20	76	149	375
	Total	131	100	43	38	115	209	636
Dec-15	Lower respiratory tract infection	22	17	3	7	16	11	76
	Upper respiratory tract infection	34	19	7	4	14	24	102
	Watery diarrhoea	23	10	0	1	0	1	35
	Bloody diarrhoea	1	1	1	0	1	2	6
	Typhoid	1	1	2	0	1	1	6
	Abscess/Wound/Burns	1	2	3	2	8	6	22
	Skin diseases	6	2	3	1	6	9	27
	Meningitis	0	0	0	0	0	0	0
	Measles	0	0	0	0	0	0	0
	UTI	0	0	0	0	0	5	5
	B1 deficiency	0	0	0	0	0	3	3
	Worms	3	1	3	1	2	3	13
	Others	58	58	19	13	66	141	355
	Total	149	111	41	29	114	206	650
Jan-16	Lower respiratory tract infection	12	16	3	3	9	7	50
	Upper respiratory tract infection	0	0	0	0	0	0	0
	Watery diarrhoea	0	0	0	0	0	0	0
	Bloody diarrhoea	0	0	0	0	0	0	0
	Typhoid	0	0	0	0	0	0	0
	Abscess/Wound/Burns	0	0	0	0	0	0	0
	Skin diseases	0	0	0	0	0	0	0
	Meningitis	0	0	0	0	0	0	0
	Measles	0	0	0	0	0	0	0
	UTI	0	0	0	0	0	0	0
	B1 deficiency	0	0	0	0	0	0	0
	Worms	0	0	0	0	0	0	0
	Others	0	0	0	0	0	0	0
	Total	12	16	3	3	9	7	50

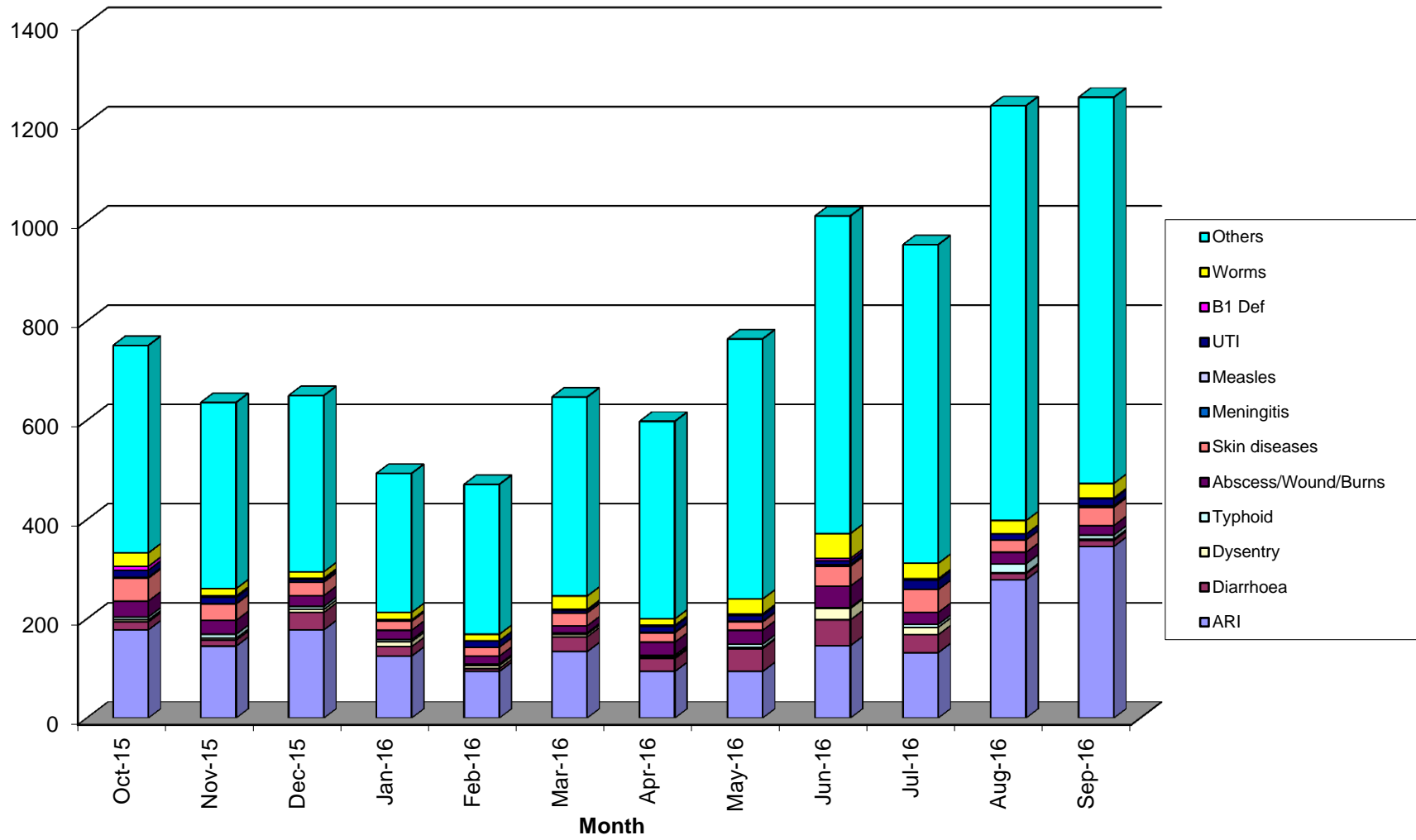
No. Malaria total Summary report: SMRU Migrant MKT: Oct-2015-September-2016

Month	Diagnosis	Age						Total
		0-4y		5-15y		>15y		
		Male	Female	Male	Female	Male	Female	
Feb-16	Lower respiratory tract infection	13	10	1	0	6	8	38
	Upper respiratory tract infection	9	17	2	5	7	16	56
	Watery diarrhoea	5	0	0	0	0	1	6
	Bloody diarrhoea	2	1	0	1	1	1	6
	Typhoid	0	1	0	1	1	0	3
	Abscess/Wound/Burns	2	1	2	3	5	3	16
	Skin diseases	2	6	3	0	5	2	18
	Meningitis	0	0	0	0	0	0	0
	Measles	0	0	0	0	0	0	0
	UTI	3	0	1	0	3	6	13
	B1 deficiency	0	0	0	0	0	0	0
	Worms	2	1	3	0	2	5	13
	Others	62	47	5	14	43	131	302
Total	100	84	17	24	73	173	471	
Mar-16	Lower respiratory tract infection	21	6	3	5	6	11	52
	Upper respiratory tract infection	25	21	6	6	9	15	82
	Watery diarrhoea	17	7	0	0	3	3	30
	Bloody diarrhoea	1	2	0	0	2	0	5
	Typhoid	1	1	1	0	0	0	3
	Abscess/Wound/Burns	2	0	0	1	6	5	14
	Skin diseases	3	6	2	5	4	6	26
	Meningitis	0	0	0	0	0	0	0
	Measles	0	0	0	0	0	0	0
	UTI	0	0	0	0	1	4	5
	B1 deficiency	0	0	0	0	0	2	2
	Worms	2	5	6	5	4	5	27
	Others	90	65	24	11	62	149	401
Total	162	113	42	33	97	200	647	
Apr-16	Lower respiratory tract infection	6	5	0	2	7	3	23
	Upper respiratory tract infection	21	17	8	10	6	9	71
	Watery diarrhoea	12	5	2	2	1	4	26
	Bloody diarrhoea	0	0	0	0	0	3	3
	Typhoid	1	0	0	0	0	3	4
	Abscess/Wound/Burns	2	0	3	2	12	7	26
	Skin diseases	3	4	1	3	4	4	19
	Meningitis	0	1	0	0	0	0	1
	Measles	0	0	0	0	0	0	0
	UTI	0	1	0	0	2	9	12
	B1 deficiency	0	0	0	0	0	2	2
	Worms	1	2	4	2	2	2	13
	Others	112	59	23	16	60	128	398
Total	158	94	41	37	94	174	598	
May-16	Lower respiratory tract infection	7	3	1	2	8	5	26
	Upper respiratory tract infection	17	14	13	7	7	10	68
	Watery diarrhoea	18	18	2	0	4	4	46
	Bloody diarrhoea	0	0	0	0	1	1	2
	Typhoid	1	1	2	1	1	1	7
	Abscess/Wound/Burns	5	3	3	4	10	3	28
	Skin diseases	3	4	2	2	4	2	17
	Meningitis	1	0	0	0	0	0	1
	Measles	0	0	0	0	0	0	0
	UTI	0	0	2	0	2	8	12
	B1 deficiency	0	0	0	0	1	2	3
	Worms	5	5	1	7	5	7	30
	Others	129	97	34	35	81	148	524
Total	186	145	60	58	124	191	764	

No. Malaria total Summary report: SMRU Migrant MKT: Oct-2015-September-2016

Month	Diagnosis	Age						Total
		0-4y		5-15y		>15y		
		Male	Female	Male	Female	Male	Female	
Jun-16	Lower respiratory tract infection	15	13	4	1	4	4	41
	Upper respiratory tract infection	36	24	9	9	13	14	105
	Watery diarrhoea	26	9	3	5	2	7	52
	Bloody diarrhoea	10	4	1	2	3	3	23
	Typhoid	0	0	0	1	1	0	2
	Abscess/Wound/Burns	3	0	8	6	18	8	43
	Skin diseases	10	10	6	0	5	9	40
	Meningitis	0	1	0	0	0	0	1
	Measles	1	0	1	0	0	0	2
	UTI	0	0	1	0	2	5	8
	B1 deficiency	0	0	0	1	1	3	5
	Worms	10	5	11	10	9	5	50
	Others	113	118	47	43	96	223	640
	Total	224	184	91	78	154	281	1012
Jul-16	Lower respiratory tract infection	17	15	5	3	4	8	52
	Upper respiratory tract infection	21	20	10	10	7	12	80
	Watery diarrhoea	22	8	1	2	2	1	36
	Bloody diarrhoea	6	2	2	1	1	3	15
	Typhoid	0	1	3	0	0	2	6
	Abscess/Wound/Burns	4	2	2	2	8	6	24
	Skin diseases	14	7	3	1	11	10	46
	Meningitis	0	0	0	0	0	0	0
	Measles	0	0	0	0	0	0	0
	UTI	1	1	0	2	4	11	19
	B1 deficiency	0	0	0	0	0	3	3
	Worms	3	3	4	5	5	11	31
	Others	109	122	38	41	103	229	642
	Total	197	181	68	67	145	296	954
Aug-16	Lower respiratory tract infection	41	38	18	8	15	18	138
	Upper respiratory tract infection	28	32	20	21	18	22	141
	Watery diarrhoea	5	3	2	0	1	1	12
	Bloody diarrhoea	1	1	0	0	0	0	2
	Typhoid	2	1	6	5	2	2	18
	Abscess/Wound/Burns	0	5	4	3	5	6	23
	Skin diseases	5	7	5	1	3	4	25
	Meningitis	0	0	0	0	0	0	0
	Measles	0	0	0	0	0	0	0
	UTI	0	0	0	0	3	9	12
	B1 deficiency	0	0	0	0	0	0	0
	Worms	4	4	3	6	3	7	27
	Others	135	105	82	77	141	296	836
	Total	221	196	140	121	191	365	1234
Sep-16	Lower respiratory tract infection	80	60	12	11	15	25	203
	Upper respiratory tract infection	25	25	19	9	26	39	143
	Watery diarrhoea	5	3	0	0	2	2	12
	Bloody diarrhoea	0	1	1	0	0	1	3
	Typhoid	1	2	1	0	3	1	8
	Abscess/Wound/Burns	1	4	2	0	8	4	19
	Skin diseases	7	7	1	6	6	10	37
	Meningitis	0	1	0	0	0	2	3
	Measles	0	0	0	0	0	0	0
	UTI	0	0	0	0	6	8	14
	B1 deficiency	0	1	0	0	0	1	2
	Worms	3	4	4	7	7	4	29
	Others	127	100	82	66	134	269	778
	Total	249	208	122	99	207	366	1251

MawkerThai Non Malaria Chart



No. Malaria total Summary report: SMRU Migrant MRC: Oct-2015-September-2016

Month	Age							Total
	<5y		5-15y		>15y			
	Male	Female	Male	Female	Male	Female		
Oct-15	Lower respiratory tract infection	8	8	3	0	3	3	25
	Upper respiratory tract infection	8	3	4	7	2	11	35
	Watery diarrhoea	1	1	0	0	1	1	4
	Bloody diarrhoea	1	0	0	0	0	0	1
	Typhoid	0	1	0	0	0	0	1
	Abscess/Wound/Burns	2	0	1	3	6	1	13
	Skin diseases	3	1	1	0	1	0	6
	Meningitis	0	0	0	0	0	0	0
	Measles	0	0	0	0	0	0	0
	UTI	0	0	0	0	0	2	2
	B1 deficiency	0	0	0	0	0	0	0
	Worms	5	0	6	2	3	4	20
	Others	8	6	13	14	38	49	128
Total	36	20	28	26	54	71	235	
Nov-15	Lower respiratory tract infection	9	6	2	2	5	2	26
	Upper respiratory tract infection	11	6	8	5	5	14	49
	Watery diarrhoea	0	0	0	0	0	0	0
	Bloody diarrhoea	0	0	0	0	0	1	1
	Typhoid	0	0	0	0	1	1	2
	Abscess/Wound/Burns	1	1	6	2	3	1	14
	Skin diseases	2	1	2	0	1	1	7
	Meningitis	0	0	0	0	0	0	0
	Measles	0	0	0	0	0	0	0
	UTI	0	0	0	0	0	1	1
	B1 deficiency	0	0	0	0	0	2	2
	Worms	1	2	2	1	0	1	7
	Others	6	9	20	12	24	33	104
Total	30	25	40	22	39	57	213	
Dec-15	Lower respiratory tract infection	15	7	0	4	2	6	34
	Upper respiratory tract infection	7	5	7	10	7	10	46
	Watery diarrhoea	3	2	1	0	1	0	7
	Bloody diarrhoea	0	0	0	0	0	0	0
	Typhoid	0	0	1	1	0	1	3
	Abscess/Wound/Burns	1	1	1	1	1	4	9
	Skin diseases	1	1	1	1	2	0	6
	Meningitis	0	0	0	0	0	0	0
	Measles	0	0	0	0	0	0	0
	UTI	0	0	0	0	0	1	1
	B1 deficiency	0	0	0	0	0	0	0
	Worms	2	1	3	0	0	2	8
	Others	4	6	5	6	15	39	75
Total	33	23	19	23	28	63	189	
Jan-16	Lower respiratory tract infection	3	6	2	6	3	6	26
	Upper respiratory tract infection	7	1	3	6	4	2	23
	Watery diarrhoea	4	2	1	0	0	0	7
	Bloody diarrhoea	1	1	0	0	0	0	2
	Typhoid	0	0	0	0	1	0	1
	Abscess/Wound/Burns	0	0	1	1	6	2	10
	Skin diseases	1	0	1	1	1	1	5
	Meningitis	0	0	0	0	0	0	0
	Measles	0	0	0	0	0	0	0
	UTI	0	0	0	0	0	1	1
	B1 deficiency	0	0	0	0	0	0	0
	Worms	1	3	3	1	0	1	9
	Others	4	7	7	10	9	28	65
Total	21	20	18	25	24	41	149	

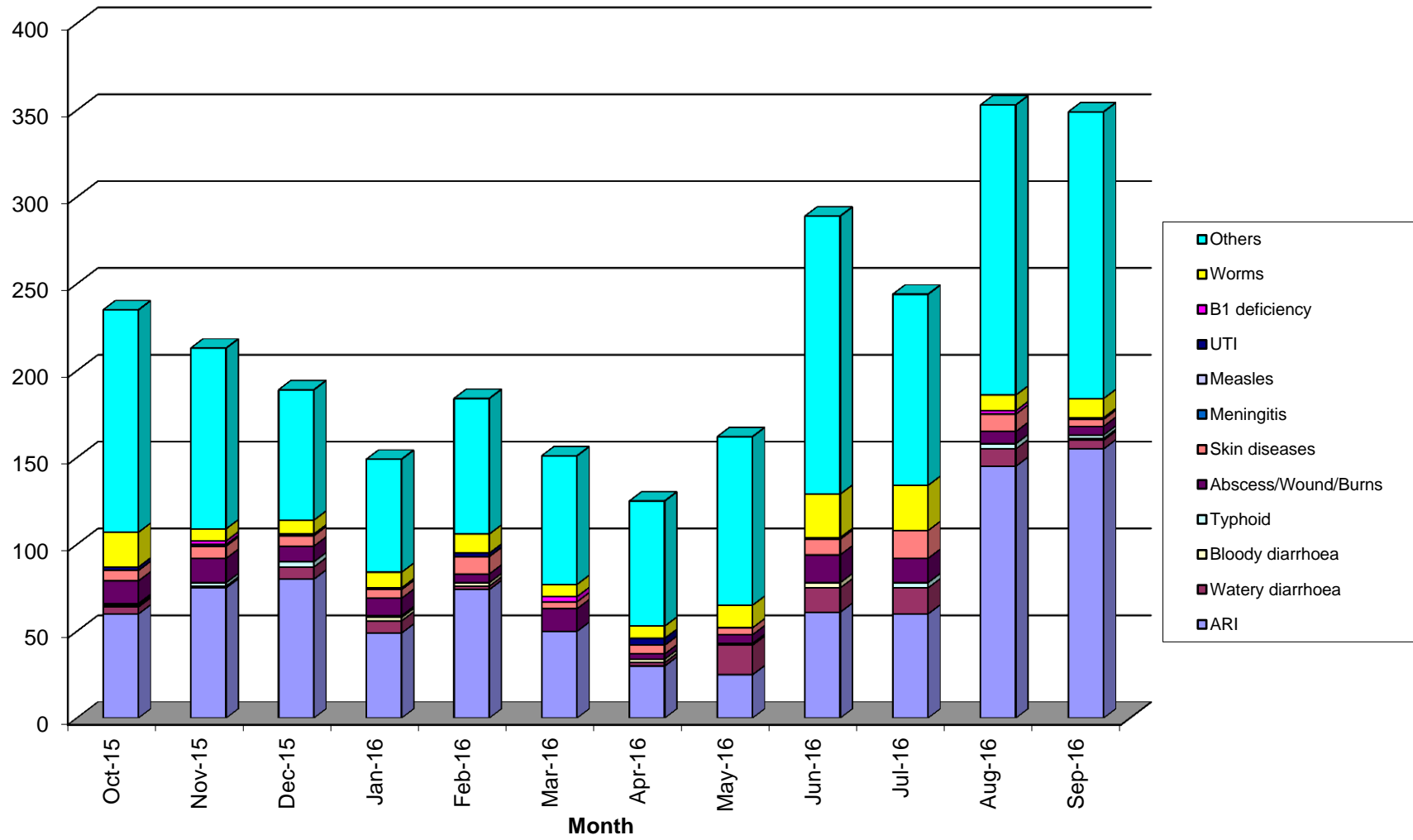
No. Malaria total Summary report: SMRU Migrant MRC: Oct-2015-September-2016

Month	Diagnosis	Age						Total
		0-4y		5-15y		>15y		
		Male	Female	Male	Female	Male	Female	
Feb-16	Lower respiratory tract infection	9	10	7	9	5	6	46
	Upper respiratory tract infection	8	4	5	2	1	8	28
	Watery diarrhoea	1	0	1	0	0	0	2
	Bloody diarrhoea	1	0	1	0	0	0	2
	Typhoid	0	0	0	0	0	0	0
	Abscess/Wound/Burns	0	2	2	0	0	1	5
	Skin diseases	2	2	2	1	2	1	10
	Meningitis	0	0	0	0	0	0	0
	Measles	0	0	0	0	0	0	0
	UTI	0	0	0	0	0	2	2
	B1 deficiency	0	0	0	0	0	0	0
	Worms	2	1	1	3	0	4	11
	Others	8	11	13	9	8	29	78
Total	31	30	32	24	16	51	184	
Mar-16	Lower respiratory tract infection	8	4	4	4	6	6	32
	Upper respiratory tract infection	3	5	3	2	2	3	18
	Watery diarrhoea	0	0	0	0	0	0	0
	Bloody diarrhoea	0	0	0	0	0	0	0
	Typhoid	0	0	0	0	0	0	0
	Abscess/Wound/Burns	1	1	4	3	2	2	13
	Skin diseases	2	0	1	1	0	0	4
	Meningitis	0	0	0	0	0	0	0
	Measles	0	0	0	0	0	0	0
	UTI	0	0	0	0	0	0	0
	B1 deficiency	0	0	0	0	1	2	3
	Worms	0	1	1	4	0	1	7
	Others	9	10	9	10	8	28	74
Total	23	21	22	24	19	42	151	
Apr-16	Lower respiratory tract infection	2	3	1	0	2	3	11
	Upper respiratory tract infection	3	4	3	5	3	1	19
	Watery diarrhoea	1	0	0	0	0	1	2
	Bloody diarrhoea	0	0	0	2	0	0	2
	Typhoid	0	0	0	0	0	0	0
	Abscess/Wound/Burns	1	0	1	0	1	0	3
	Skin diseases	2	0	1	0	1	1	5
	Meningitis	0	0	0	0	0	0	0
	Measles	0	0	0	0	0	0	0
	UTI	0	1	0	0	1	2	4
	B1 deficiency	0	0	0	0	0	0	0
	Worms	2	2	0	1	1	1	7
	Others	8	12	7	10	12	23	72
Total	19	22	13	18	21	32	125	
May-16	Lower respiratory tract infection	3	0	0	0	1	3	7
	Upper respiratory tract infection	2	2	4	8	1	1	18
	Watery diarrhoea	10	5	0	1	1	0	17
	Bloody diarrhoea	0	1	0	0	0	0	1
	Typhoid	0	0	0	0	0	0	0
	Abscess/Wound/Burns	1	0	0	0	2	2	5
	Skin diseases	1	0	1	0	1	1	4
	Meningitis	0	0	0	0	0	0	0
	Measles	0	0	0	0	0	0	0
	UTI	0	0	0	0	0	0	0
	B1 deficiency	0	0	0	0	0	0	0
	Worms	1	2	0	4	2	4	13
	Others	8	11	8	12	21	37	97
Total	26	21	13	25	29	48	162	

No. Malaria total Summary report: SMRU Migrant MRC: Oct-2015-September-2016

Month	Diagnosis	Age						Total
		0-4y		5-15y		>15y		
		Male	Female	Male	Female	Male	Female	
Jun-16	Lower respiratory tract infection	3	2	2	4	4	5	20
	Upper respiratory tract infection	2	5	9	10	7	8	41
	Watery diarrhoea	5	8	0	1	0	0	14
	Bloody diarrhoea	1	0	1	1	0	0	3
	Typhoid	0	0	0	0	0	0	0
	Abscess/Wound/Burns	3	2	2	2	4	3	16
	Skin diseases	3	1	1	2	2	0	9
	Meningitis	0	0	0	0	0	0	0
	Measles	0	0	0	0	0	0	0
	UTI	0	0	0	0	0	1	1
	B1 deficiency	0	0	0	0	0	0	0
	Worms	3	2	8	4	3	5	25
	Others	16	12	25	21	31	55	160
Total	36	32	48	45	51	77	289	
Jul-16	Lower respiratory tract infection	2	5	3	0	5	5	20
	Upper respiratory tract infection	8	6	9	6	3	8	40
	Watery diarrhoea	3	4	1	3	1	3	15
	Bloody diarrhoea	0	0	0	0	0	0	0
	Typhoid	0	0	0	0	2	1	3
	Abscess/Wound/Burns	0	0	3	2	9	0	14
	Skin diseases	4	4	4	1	3	0	16
	Meningitis	0	0	0	0	0	0	0
	Measles	0	0	0	0	0	0	0
	UTI	0	0	0	0	0	0	0
	B1 deficiency	0	0	0	0	0	0	0
	Worms	4	2	7	5	3	5	26
	Others	4	7	18	18	19	44	110
Total	25	28	45	35	45	66	244	
Aug-16	Lower respiratory tract infection	20	16	11	26	6	2	81
	Upper respiratory tract infection	5	15	9	20	5	10	64
	Watery diarrhoea	2	6	0	1	1	0	10
	Bloody diarrhoea	0	0	0	0	0	0	0
	Typhoid	0	0	0	0	2	1	3
	Abscess/Wound/Burns	1	0	1	2	2	1	7
	Skin diseases	2	2	1	1	1	3	10
	Meningitis	0	0	0	0	0	0	0
	Measles	0	0	0	0	0	0	0
	UTI	0	0	0	0	0	0	0
	B1 deficiency	0	0	0	0	0	2	2
	Worms	1	0	3	1	0	4	9
	Others	21	20	24	17	33	52	167
Total	52	59	49	68	50	75	353	
Sep-16	Lower respiratory tract infection	13	15	4	8	14	11	65
	Upper respiratory tract infection	9	10	21	18	13	19	90
	Watery diarrhoea	4	1	0	0	0	0	5
	Bloody diarrhoea	0	0	0	0	1	0	1
	Typhoid	0	0	0	1	1	0	2
	Abscess/Wound/Burns	1	0	1	0	0	3	5
	Skin diseases	0	1	2	1	0	0	4
	Meningitis	0	0	0	0	0	0	0
	Measles	0	0	0	0	0	0	0
	UTI	0	0	0	0	0	0	0
	B1 deficiency	0	0	0	0	0	1	1
	Worms	1	0	4	3	0	3	11
	Others	13	12	28	30	28	54	165
Total	41	39	60	61	57	91	349	

Munruchai Non Malaria Chart



No. Malaria total Summary report: SMRU Migrant WPA: Oct-2015-September-2016

Month	Age							Total
	<5y		5-15y		>15y			
	Male	Female	Male	Female	Male	Female		
Oct-15	Lower respiratory tract infection	27	28	2	6	5	0	68
	Upper respiratory tract infection	54	33	20	15	15	20	157
	Watery diarrhoea	5	7	1	0	4	1	18
	Bloody diarrhoea	0	0	0	0	0	0	0
	Typhoid	1	1	1	0	0	0	3
	Abscess/Wound/Burns	0	4	1	2	4	4	15
	Skin diseases	7	12	6	3	3	8	39
	Meningitis	0	0	0	0	0	0	0
	Measles	0	0	0	0	0	0	0
	UTI	0	0	0	1	1	5	7
	B1 deficiency	0	0	0	0	1	1	2
	Worms	11	14	8	10	12	13	68
	Others	97	62	31	34	95	184	503
Total	202	161	70	71	140	236	880	
Nov-15	Lower respiratory tract infection	16	15	7	4	3	0	45
	Upper respiratory tract infection	18	25	8	7	12	15	85
	Watery diarrhoea	8	2	0	0	0	1	11
	Bloody diarrhoea	0	0	0	0	0	0	0
	Typhoid	0	0	0	0	0	1	1
	Abscess/Wound/Burns	4	3	2	0	0	8	17
	Skin diseases	3	3	1	3	0	1	11
	Meningitis	0	0	0	0	0	0	0
	Measles	0	0	0	0	0	0	0
	UTI	0	1	0	0	1	2	4
	B1 deficiency	0	1	0	0	0	1	2
	Worms	10	7	5	9	8	8	47
	Others	78	61	23	31	75	183	451
Total	137	118	46	54	99	220	674	
Dec-15	Lower respiratory tract infection	23	8	0	1	7	1	40
	Upper respiratory tract infection	37	22	6	11	10	8	94
	Watery diarrhoea	9	6	0	0	0	0	15
	Bloody diarrhoea	0	0	0	0	0	0	0
	Typhoid	0	0	0	0	1	0	1
	Abscess/Wound/Burns	1	1	0	2	2	1	7
	Skin diseases	1	1	0	3	1	5	11
	Meningitis	0	0	0	0	0	0	0
	Measles	0	0	0	0	0	0	0
	UTI	0	2	0	0	1	3	6
	B1 deficiency	0	0	0	0	1	0	1
	Worms	11	8	4	6	8	12	49
	Others	64	70	19	23	80	187	443
Total	146	118	29	46	111	217	667	
Jan-16	Lower respiratory tract infection	11	11	2	1	3	1	29
	Upper respiratory tract infection	46	38	13	11	14	22	144
	Watery diarrhoea	20	11	0	0	0	1	32
	Bloody diarrhoea	0	0	0	0	1	0	1
	Typhoid	2	0	0	0	0	1	3
	Abscess/Wound/Burns	1	2	1	2	5	6	17
	Skin diseases	3	0	2	2	1	2	10
	Meningitis	0	0	0	0	0	0	0
	Measles	0	0	0	0	0	0	0
	UTI	1	0	1	1	0	3	6
	B1 deficiency	0	0	0	0	0	1	1
	Worms	23	11	6	14	11	16	81
	Others	71	74	22	19	75	158	419
Total	178	147	47	50	110	211	743	

No. Malaria total Summary report: SMRU Migrant WPA: Oct-2015-September-2016

Month	Diagnosis	Age						Total
		0-4y		5-15y		>15y		
		Male	Female	Male	Female	Male	Female	
Feb-16	Lower respiratory tract infection	13	10	4	1	2	4	34
	Upper respiratory tract infection	23	23	6	7	9	14	82
	Watery diarrhoea	19	5	0	0	0	2	26
	Bloody diarrhoea	0	0	0	0	0	0	0
	Typhoid	0	0	0	0	0	1	1
	Abscess/Wound/Burns	2	1	1	0	5	2	11
	Skin diseases	3	3	0	0	0	2	8
	Meningitis	0	0	0	0	0	0	0
	Measles	0	0	0	0	0	0	0
	UTI	0	0	0	0	0	1	1
	B1 deficiency	0	0	0	0	0	1	1
	Worms	9	6	4	2	5	7	33
	Others	74	78	17	18	64	142	393
Total	143	126	32	28	85	176	590	
Mar-16	Lower respiratory tract infection	6	6	1	1	1	2	17
	Upper respiratory tract infection	25	25	9	7	10	11	87
	Watery diarrhoea	8	11	0	0	1	2	22
	Bloody diarrhoea	0	0	0	0	0	0	0
	Typhoid	0	1	0	0	0	0	1
	Abscess/Wound/Burns	0	4	3	1	2	4	14
	Skin diseases	5	0	3	0	2	4	14
	Meningitis	0	0	0	0	0	0	0
	Measles	0	0	0	0	0	0	0
	UTI	0	0	0	3	3	1	7
	B1 deficiency	0	0	0	0	0	2	2
	Worms	11	6	7	4	7	15	50
	Others	113	80	20	27	69	150	459
Total	168	133	43	43	95	191	673	
Apr-16	Lower respiratory tract infection	11	7	2	0	3	1	24
	Upper respiratory tract infection	19	17	14	8	9	5	72
	Watery diarrhoea	3	1	0	0	1	2	7
	Bloody diarrhoea	0	0	0	0	0	0	0
	Typhoid	0	0	0	0	0	0	0
	Abscess/Wound/Burns	3	0	1	0	2	2	8
	Skin diseases	7	4	1	0	1	1	14
	Meningitis	0	0	0	0	0	0	0
	Measles	0	0	0	0	0	0	0
	UTI	1	1	0	0	1	2	5
	B1 deficiency	0	0	0	0	1	1	2
	Worms	5	7	8	5	6	6	37
	Others	84	78	19	24	62	129	396
Total	133	115	45	37	86	149	565	
May-16	Lower respiratory tract infection	9	4	0	1	2	1	17
	Upper respiratory tract infection	31	25	11	11	7	15	100
	Watery diarrhoea	5	5	1	0	0	2	13
	Bloody diarrhoea	0	0	0	0	0	0	0
	Typhoid	0	0	0	0	0	0	0
	Abscess/Wound/Burns	3	4	1	3	1	2	14
	Skin diseases	5	5	2	0	0	2	14
	Meningitis	0	0	0	0	0	0	0
	Measles	0	0	0	0	0	0	0
	UTI	0	1	0	0	1	3	5
	B1 deficiency	0	0	0	0	1	0	1
	Worms	10	10	8	8	6	5	47
	Others	96	104	26	41	96	199	562
Total	159	158	49	64	114	229	773	

No. Malaria total Summary report: SMRU Migrant WPA: Oct-2015-September-2016

Month	Diagnosis	Age						Total
		0-4y		5-15y		>15y		
		Male	Female	Male	Female	Male	Female	
Jun-16	Lower respiratory tract infection	16	7	2	1	2	4	32
	Upper respiratory tract infection	51	36	18	11	13	13	142
	Watery diarrhoea	13	6	0	0	1	0	20
	Bloody diarrhoea	0	0	0	0	0	1	1
	Typhoid	0	0	0	0	0	0	0
	Abscess/Wound/Burns	3	2	1	2	3	3	14
	Skin diseases	4	6	2	1	1	4	18
	Meningitis	0	0	0	0	0	0	0
	Measles	0	0	0	0	0	0	0
	UTI	0	0	0	0	0	2	2
	B1 deficiency	0	0	0	0	1	0	1
	Worms	11	20	7	15	16	16	85
	Others	114	102	45	39	112	241	653
Total	212	179	75	69	149	284	968	
Jul-16	Lower respiratory tract infection	19	23	1	2	2	2	49
	Upper respiratory tract infection	58	65	37	45	22	41	268
	Watery diarrhoea	15	15	1	1	1	6	39
	Bloody diarrhoea	0	0	0	0	0	0	0
	Typhoid	0	0	0	0	0	0	0
	Abscess/Wound/Burns	6	4	0	1	8	6	25
	Skin diseases	12	7	4	2	2	8	35
	Meningitis	0	0	0	0	0	0	0
	Measles	0	0	0	0	0	0	0
	UTI	0	4	0	0	0	3	7
	B1 deficiency	0	0	0	0	1	0	1
	Worms	17	16	16	18	11	35	113
	Others	108	87	66	63	138	259	721
Total	235	221	125	132	185	360	1258	
Aug-16	Lower respiratory tract infection	51	52	4	7	4	3	121
	Upper respiratory tract infection	102	76	55	59	41	46	379
	Watery diarrhoea	6	4	1	0	1	2	14
	Bloody diarrhoea	0	0	0	0	0	0	0
	Typhoid	0	0	0	0	0	0	0
	Abscess/Wound/Burns	4	3	6	4	2	2	21
	Skin diseases	6	4	4	4	4	7	29
	Meningitis	0	0	0	0	0	0	0
	Measles	0	0	0	0	0	0	0
	UTI	0	0	0	0	1	1	2
	B1 deficiency	0	0	1	0	1	1	3
	Worms	11	9	11	11	3	20	65
	Others	84	120	55	33	133	270	695
Total	264	268	137	118	190	352	1329	
Sep-16	Lower respiratory tract infection	44	34	3	5	2	2	90
	Upper respiratory tract infection	69	65	27	19	29	32	241
	Watery diarrhoea	3	3	0	1	1	0	8
	Bloody diarrhoea	0	1	0	0	0	0	1
	Typhoid	0	0	0	0	0	0	0
	Abscess/Wound/Burns	6	2	3	2	4	2	19
	Skin diseases	8	3	3	1	3	1	19
	Meningitis	0	0	0	0	0	0	0
	Measles	0	0	0	0	0	0	0
	UTI	0	0	0	0	1	4	5
	B1 deficiency	0	0	0	0	1	0	1
	Worms	13	13	6	5	7	14	58
	Others	107	92	42	54	115	218	628
Total	250	213	84	87	163	273	1070	

Malaria total Summary report: SMRU Migrant Oct 2015 - September 2016

Total number of SCBU admissions **373**

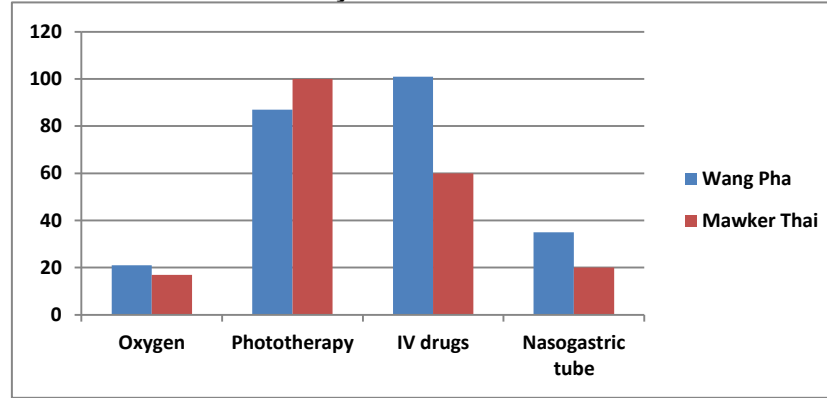
Baseline data

	Wang Pha	Mawker Thai
Number of admissions	195	178
Median gestation (weeks)	3.8	36.5
Range gestation (weeks)	27.1-43	28-42.6
Median birth weight (kg)	3.86	2.59
Range birth weight (kg)	0.95-4.62	2.89-4.1

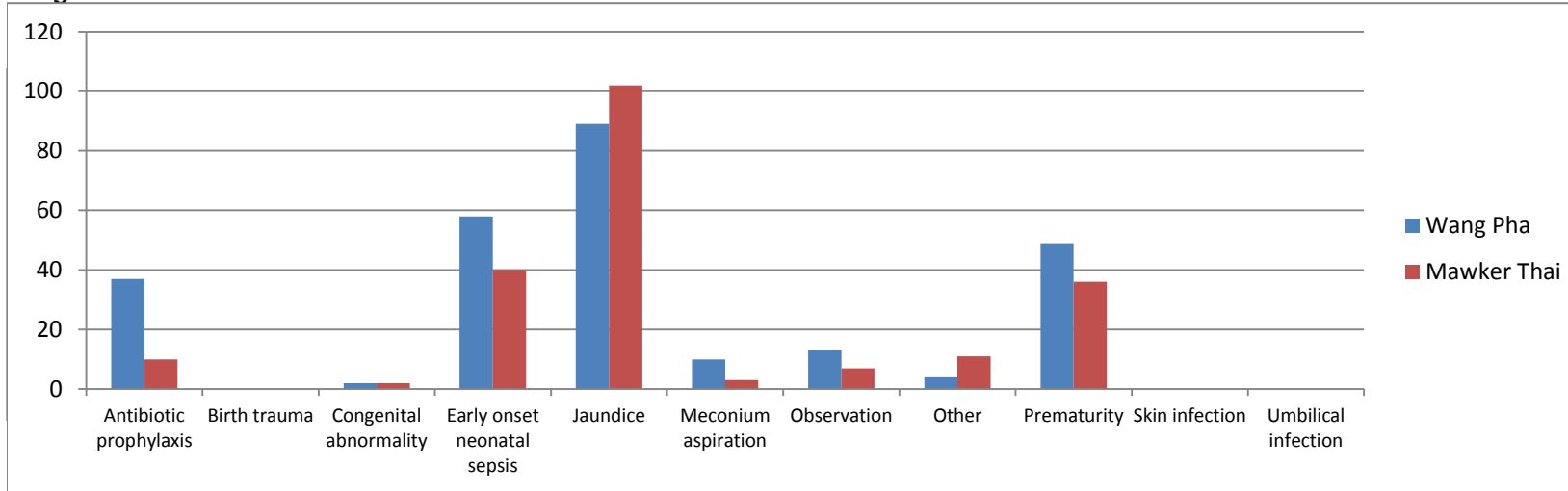
Neonatal Deaths in SCBU

	Wang Pha	Mawker Thai
< 28 weeks	2	0
28.0 - 36.7 weeks	2	0
> 37 weeks	3	1

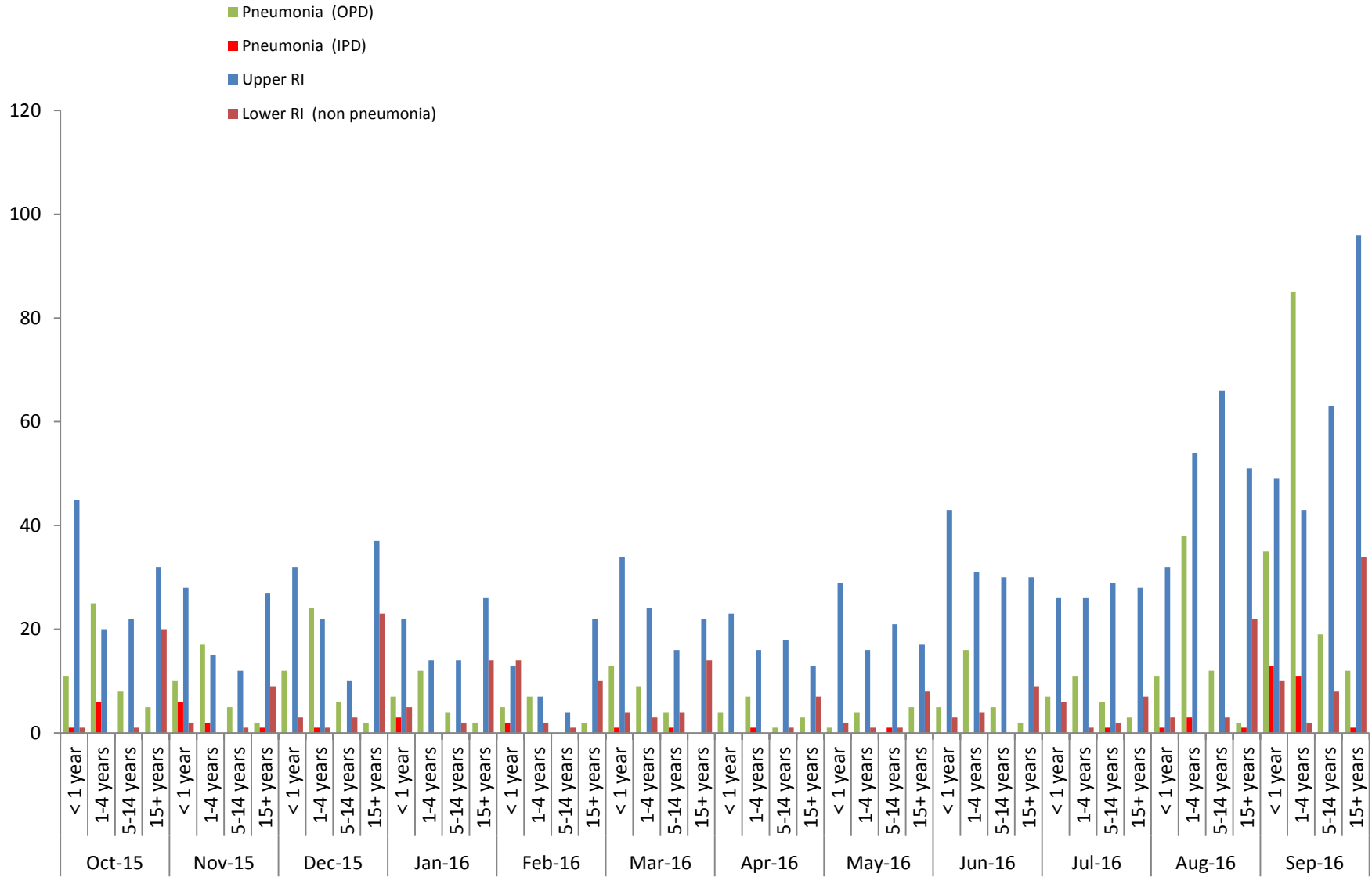
Intensity of care



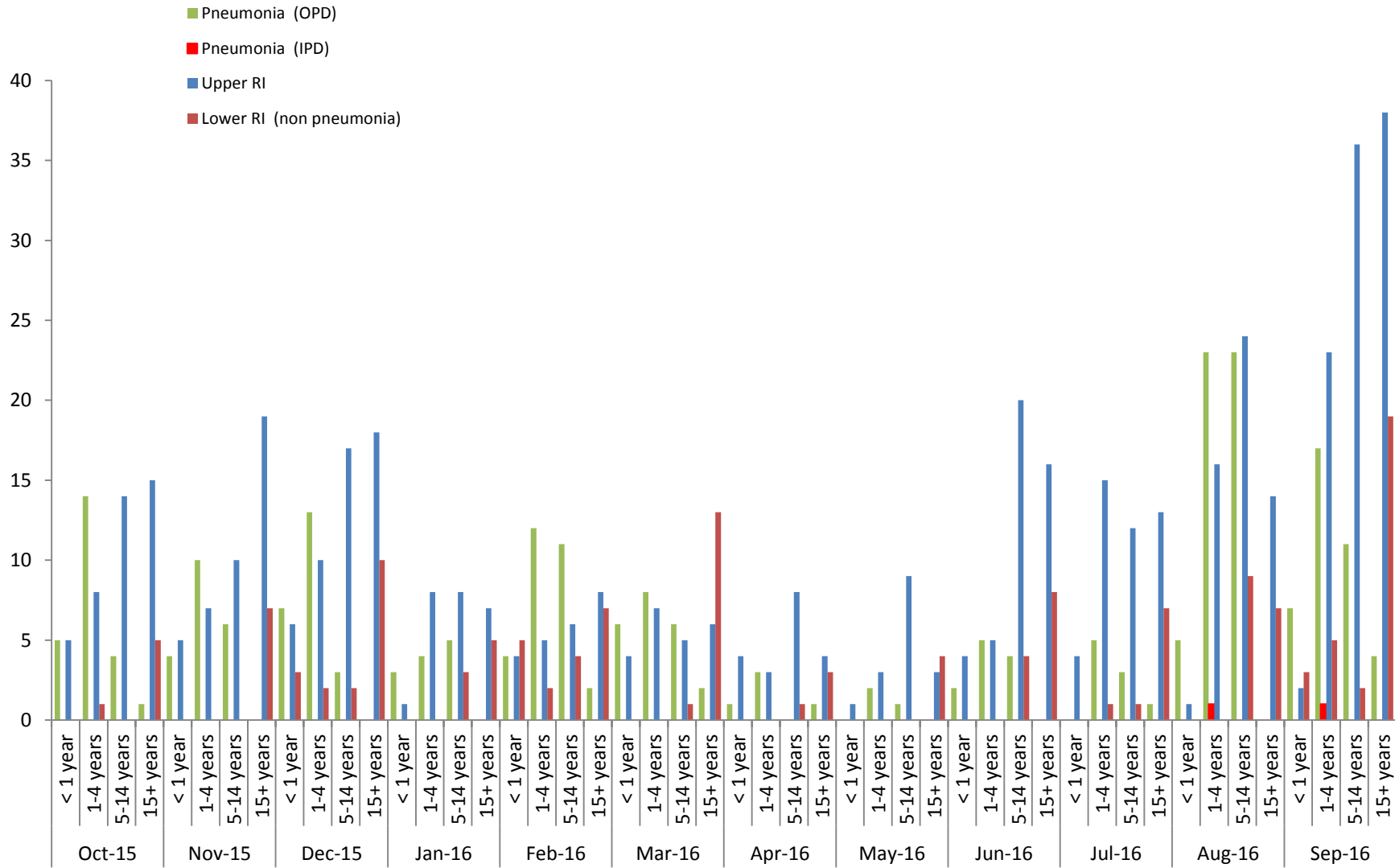
Diagnosis on admission



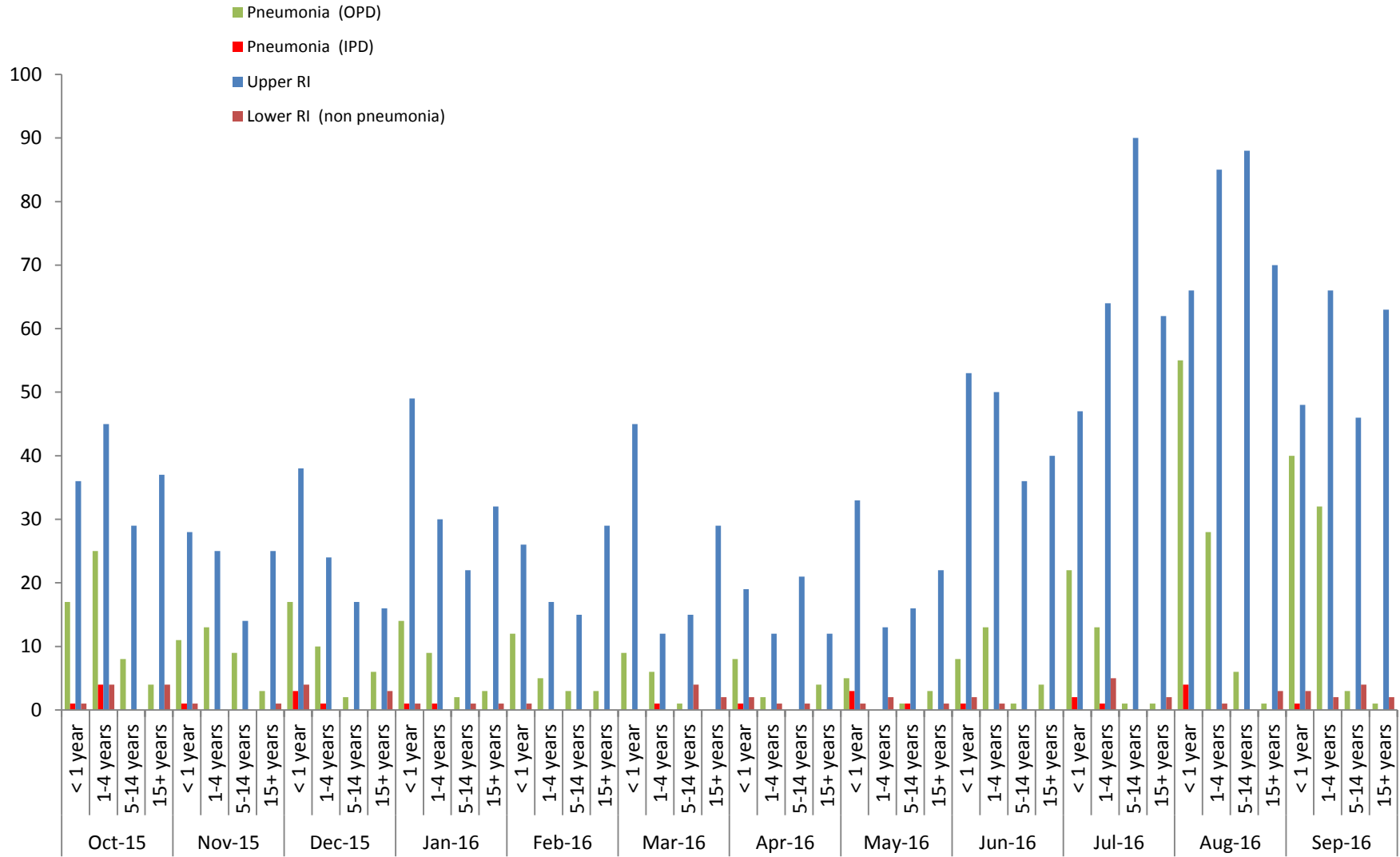
Maw Ker Thai Respiratory infection : October 2015-September 2016



Munrunchai Respiratory infection : October 2015-September 2016



Wang Pa Respiratory infection : October 2015-September 2016



แผนที่ที่ตั้งคลินิกหน่วยวิจัยมาเลเรียโซไกล
Map of SMRU clinic sites

